

PRODUCT DATA SHEET

Product view



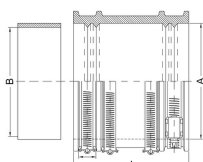
Product information

QR Code



Product group	Standard Coupling Type 2B Plus
Item number	CRA14040-144/131
EAN-Code	4260431850957
Product name	Standard Coupling CSC 150 Type 2B Plus, DN 100 (Concrete pipe on Clay pipe)

Technical drawing



Specification

A Size range (mm)	144
B Size range (mm)	131
L Length (mm)	120
Pressure (bar)	2.5
Tightening torque (Nm)	6.0
Weight (kg)	0
Material	EPDM / V2A

Product description

External flexible standard coupling designed to connect two pipes with the same dimensions (DN) as well as same or different materials and surface textures; shear band ensures joint integrity and pipe alignment under load; outside diameter differences with more than 10 mm have to be compensated with Crassus Bushes; in accordance with DIN EN 295-4; with acoustic decoupling; suitable for horizontal or vertical installation; suitable for flush-mounting and soil; UV-resistant material

Certificates and approvals

MPA	Yes
CE	Yes
DIBT	Yes
SITAC	-
ETA	Yes

Stable properties

Heat-resistant (Celsius Degree)	120
Cold-resistant (Celsius degree)	-40
UV-resistant	Yes
Ground-suited	Yes
Flush-mounting suited	Yes

