

## PRODUCT DATA SHEET

### Product view



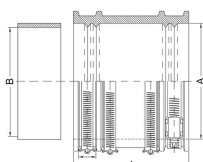
### Product information

QR Code



Product group	Standard Coupling Type 2B Plus
Item number	<b>CRA16110-254/222</b>
EAN-Code	4260431851060
Product name	Standard Coupling CSC 265 Type 2B Plus, DN 200 (Clay pipe on GGG)

### Technical drawing



### Specification

A   Size range (mm)	254
B   Size range (mm)	222
L   Length (mm)	150
Pressure (bar)	2.5
Tightening torque (Nm)	10.0
Weight (kg)	0
Material	EPDM / V2A

### Product description

External flexible standard coupling designed to connect two pipes with the same dimensions (DN) as well as same or different materials and surface textures; shear band ensures joint integrity and pipe alignment under load; outside diameter differences with more than 10 mm have to be compensated with Crassus Bushes; in accordance with DIN EN 295-4; with acoustic decoupling; suitable for horizontal or vertical installation; suitable for flush-mounting and soil; UV-resistant material

### Certificates and approvals

MPA	Yes
CE	Yes
DIBT	Yes
SITAC	-
ETA	Yes

### Stable properties

Heat-resistant (Celsius Degree)	120
Cold-resistant (Celsius degree)	-40
UV-resistant	Yes
Ground-suited	Yes
Flush-mounting suited	Yes

