

PRODUCT DATA SHEET

Product view



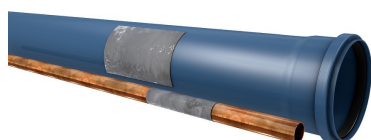
Product information

QR Code



Product group	Pipe-Patch
Item number	CRA70111
EAN-Code	4260182344460
Product name	Pipe-Patch CRP 10/15

Technical drawing



Specification

A Size range (mm)	-
B Size range (mm)	100
L Length (mm)	150
Pressure (bar)	7
Tightening torque (Nm)	-
Weight (kg)	0.08
Material	GFK

Product description

Repair-Set for plain surface, seals all holes and cracks from 1-24 mm, useable for different surface material and surface textures; hardening: 15-30 minutes; suitable for flush-mounting and soil; UV-resistant material

Certificates and approvals

MPA	-
CE	Yes
DIBT	-
SITAC	-
ETA	-

Stable properties

Heat-resistant (Celsius Degree)	210
Cold-resistant (Celsius degree)	-60
UV-resistant	Yes
Ground-suited	Yes
Flush-mounting suited	Yes

