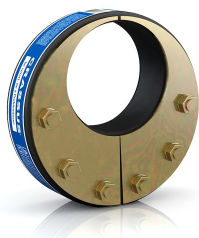


PRODUCT DATA SHEET

Product view



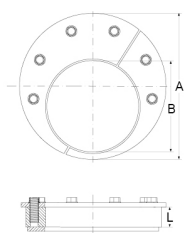
Product information

QR Code



Product group	Press Seal Type CMS30-E
Item number	CRA21194GGV
EAN-Code	4260391376290
Product name	Press Seal Type CMS30-E, core drill hole/Wall Sleeve 80mm for pipes/cables 0-55mm

Technical drawing



Specification

A Core drill hole (mm)	80
B Pipes / Cables \varnothing (mm)	0-55
L Seal (mm)	30
Pressure (bar)	2.5
Tightening torque (Nm)	-
Weight (kg)	0
Material	EPDM / GGK

Product description

Divided eccentric custom-made press seal with freely selectable sizes of pipe/cable diameter; for the installation in core drill holes or wall sleeves; water-tight feed-through for pipes/cables; against pressing water and non-pressing water; water-tight welded bolts for an optimum of steadiness and corrosion protection

Certificates and approvals

MPA	Yes
CE	-
DIBT	-
SITAC	-
ETA	-

Stable properties

Heat-resistant (Celsius Degree)	-
Cold-resistant (Celsius degree)	-
UV-resistant	Yes
Ground-suited	Yes
Flush-mounting suited	Yes

