

PRODUCT DATA SHEET

Product view



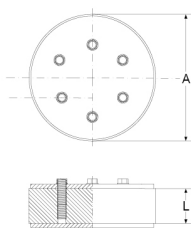
Product information

QR Code



Product group	Press Seal Type DS Blind Insert
Item number	CRA21087V2A
EAN-Code	4260391379734
Product name	Press Seal Type DS, Blind Insert core drill hole/Wall Sleeve 100mm

Technical drawing



Specification

A Core drill hole (mm)	100
B Pipes / Cables \varnothing (mm)	-
L Seal (mm)	40
Pressure (bar)	3
Tightening torque (Nm)	10.0
Weight (kg)	0.9
Material	EPDM / V2A

Product description

For the permanent or short-term water-tight sealing of a core drill hole or wall sleeve; double sealing, against pressing water and non-pressing water; water-tight welded bolts for an optimum of steadiness and corrosion protection

Certificates and approvals

MPA	Yes
CE	-
DIBT	-
SITAC	-
ETA	-

Stable properties

Heat-resistant (Celsius Degree)	-
Cold-resistant (Celsius degree)	-
UV-resistant	Yes
Ground-suited	Yes
Flush-mounting suited	Yes

