

PRODUCT DATA SHEET

Product view



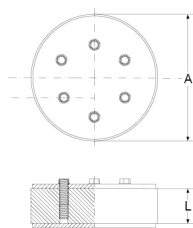
Product information

QR Code



| | |
|---------------|--|
| Product group | Press Seal Type DS Blind Insert |
| Item number | CRA21088V2A |
| EAN-Code | 4260391379727 |
| Product name | Press Seal Type DS, Blind Insert core drill hole/Wall Sleeve 125mm |

Technical drawing



Specification

| | |
|---------------------------------------|------------|
| A Core drill hole (mm) | 125 |
| B Pipes / Cables \varnothing (mm) | - |
| L Seal (mm) | 40 |
| Pressure (bar) | 3 |
| Tightening torque (Nm) | 10.0 |
| Weight (kg) | 1.5 |
| Material | EPDM / V2A |

Product description

For the permanent or short-term water-tight sealing of a core drill hole or wall sleeve; double sealing, against pressing water and non-pressing water; water-tight welded bolts for an optimum of steadiness and corrosion protection

Certificates and approvals

| | |
|-------|-----|
| MPA | Yes |
| CE | - |
| DIBT | - |
| SITAC | - |
| ETA | - |

Stable properties

| | |
|---------------------------------|-----|
| Heat-resistant (Celsius Degree) | - |
| Cold-resistant (Celsius degree) | - |
| UV-resistant | Yes |
| Ground-suited | Yes |
| Flush-mounting suited | Yes |

