

## PRODUCT DATA SHEET

### Product view



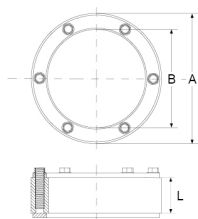
### Product information

QR Code



|               |   |
|---------------|---|
| Product group | Press Seal Type DS  |
| Item number   | <b>CRA21069V2A</b>  |
| EAN-Code      | 4260391379918   |
| Product name  | Press Seal Type DS, core drill hole/Wall Sleeve 300mm for pipes/cables 250 mm |

### Technical drawing



### Specification

|                                       |            |
|---------------------------------------|------------|
| A   Core drill hole (mm)              | 300        |
| B   Pipes / Cables $\varnothing$ (mm) | 250        |
| L   Seal (mm)                         | 40         |
| Pressure (bar)                        | 3          |
| Tightening torque (Nm)                | 10.0       |
| Weight (kg)                           | 2.4        |
| Material                              | EPDM / V2A |

### Product description

For the installation in core drill holes or wall sleeves; water-tight feed-through for pipes/cables; double sealing, against pressing water and non-pressing water; water-tight welded bolts for an optimum of steadiness and corrosion protection

### Certificates and approvals

|       |     |
|-------|-----|
| MPA   | Yes |
| CE    | -   |
| DIBT  | -   |
| SITAC | -   |
| ETA   | -   |

### Stable properties

|                                 |     |
|---------------------------------|-----|
| Heat-resistant (Celsius Degree) | -   |
| Cold-resistant (Celsius degree) | -   |
| UV-resistant                    | Yes |
| Ground-suited                   | Yes |
| Flush-mounting suited           | Yes |

