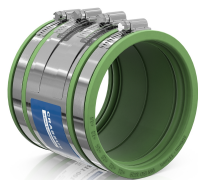




## PRODUCT DATA SHEET

### Product view



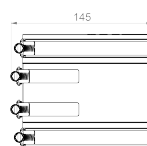
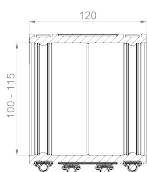
### Product information

Designation	Standard Coupling CSC 115 FKM
Item number	<b>CRA14037FKM</b>

### Product description

External adapter for connecting two piping systems with the same pipe dimensions (DN), as well as for the same or different materials and surface structures; suitable for high shear force loads; differences in external diameter of more than 10 mm should be compensated with Crassus compensating rings; noise-reducing sealing lips; suitable for horizontal or vertical installation; suitable for use in plaster, concrete, and soil; UV and weather-resistant material.

### Technical illustration



### Dimensioning

A   Size range	100-115 mm
L   Length	120 mm

### Specification

Pressure-tightness	2.5 bar / 36.3 PSI
Vacuum pressure tightness	-0,3 bar
High-pressure flushing resistance	120 bar
Socket wrench insert	SW 8 mm
Tightening torque	6,0 Nm
Angular deviation (max.)	5,0°
Insertion depth (min.)	50 mm
Product-related standard	ISO 1629, ASTM D 1418, EN 10088-2
Weight	0.7 kg
Material	FKM, Stainless steel (AISI 304)

### Resistances

Temperaturbeständigkeit	-25 / 200 °C
UV resistant	✓
Suitable for soil	✓
Flush-mounting suited	✓

