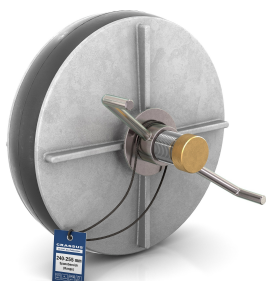




PRODUCT DATA SHEET

Product view



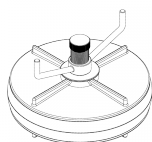
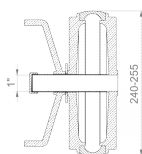
Product information

Article group	Inside End Cap AL
Item number	CRA18631
EAN / GTIN	4260182343234
Designation	Inside End Cap CSV 250

Product description

Internal quick-release plug for sealing a piping system; suitable for permanent or temporary closure; wing nut for tightening; hollow screw also serves as a test connection for water pressure testing; suitable for horizontal or vertical installation; UV and weather-resistant material.

Technical illustration



Dimensioning

A Size range	240-255 mm
B Test connection	1 Inch
L Length	150 mm

Specification

Pressure density	0,5 bar
Weight	1.7 kg
Material	EPDM, Aluminium

CE marking

according to	EN 681-1
--------------	----------

Resistances

Heat resistant	120 °C
Cold resistant	-40 °C
UV resistant	✓
Suitable for soil	✓
Flush-mounting suited	✓

