



Digital product and function overview to scan.

PRODUCT DATA SHEET

Product view



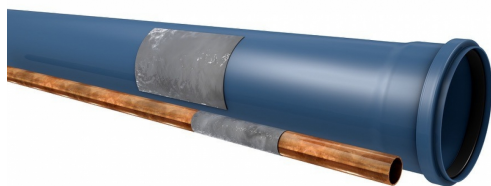
Product information

Product group	Pipe-Patch
Item number	CRA70111
EAN / GTIN	4260182344460
Product name	Pipe-Patch CRP 10/15

Product description

Repair-Set for plain surface, seals all holes and cracks from 1-24 mm, useable for different surface material and surface textures; hardening: 15-30 minutes; suitable for flush-mounting and soil; UV-resistant material

Technical drawing



Dimensioning

B Size range	100 mm
L Length	150 mm

Specification

Pressure tightness	7 bar
Weight	0.08 kg
Material	GFRP

Resistances

Heat resistant	210 °C
Cold resistant	-60 °C
UV resistant	✓
Suitable for soil	✓
Flush-mounting suited	✓

