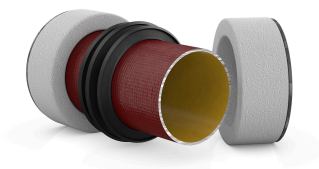




Digital product and function overview to scan.

PRODUCT DATA SHEET

Product view



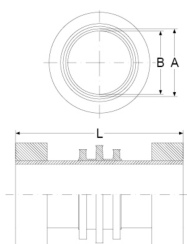
Product information

| | |
|---------------|---|
| Product group | Wall Duct SML |
| Item number | CRA22201 |
| EAN / GTIN | 4260182347485 |
| Product name | Wall Duct SML DN 70, for wall thickness 24 cm |

Product description

For the installation in waterproof concrete to connect on both sides SML-pipes; gray cast iron wastewater pipe in accordance with DIN EN 877; form and pressure stable solid wall pipe; water pressure-tight, bonded Power-Profile to prevent ingress of odor, gas or water; 2 end caps as installation aid and on each side a styrofoam recess

Technical drawing



Dimensioning

| | |
|----------------------|--------|
| A Outside-diameter | 78 mm |
| B Rohrdimension | 71 mm |
| L Length | 240 mm |

Specification

| | |
|--------------------|----------------------|
| Pressure tightness | 2.5 bar |
| Weight | 2.1 kg |
| Material | Gray cast iron, EPDM |

Approvals

MPA

Resistances

| | |
|-----------------------|---|
| UV resistant | ✓ |
| Suitable for soil | ✓ |
| Flush-mounting suited | ✓ |

