



## PRODUCT DATA SHEET

### Product view



### Product information

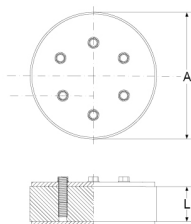
Designation Press Seal Type CS Blind Insert, DN 80mm

Item number **CRA21077V2A**

### Product description

For the permanent or short-term water-tight sealing of a core drill hole or wall sleeve; single sealing, against pressing water and non-pressing water; water-tight welded bolts for an optimum of steadiness and corrosion protection

### Technical illustration



### Dimensioning

A | Core drill hole 80 mm

L | Seal 20 mm

### Specification

Pressure-tightness 1.0 bar / 14.5 PSI

Tightening torque 10.0 Nm

Weight 0.5 kg

Material EPDM, Stainless steel (AISI 304)

**Testing / Approval** MPA

### Resistances

UV resistant ✓

Suitable for soil ✓

Flush-mounting suited ✓

