



## PRODUCT DATA SHEET

### Product view



### Product information

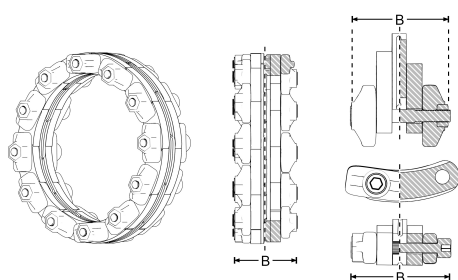
Designation Modular Seals Type CS GK-200, EPDM

Item number **CRA21300V2A**

### Product description

Press seal in modular design; for the installation in core drill holes or wall sleeves; water-tight feed-through for pipes/cables; single sealing; against pressing water and non-pressing water; modular design ideal for subsequent installation; according to the area of application there are different elastomer and steel qualities available

### Technical illustration



### Dimensioning

R | Annular gap 12.5-15.9 mm

M | Media pipe 21.3-323.9 mm

B | Thickness 40 mm

### Specification

Pressure-tightness 5.0 bar / 72.5 PSI

Tightening torque 3.0 Nm

Weight 0.022 kg

Material EPDM, Stainless steel (AISI 304), PVC (red)

**Testing / Approval** MPA

### Resistances

Temperaturbeständigkeit -40 / 120 °C

UV resistant ✓

Suitable for soil ✓

Flush-mounting suited ✓

