



## PRODUCT DATA SHEET

### Product view



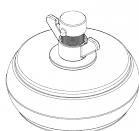
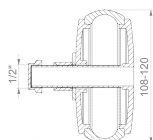
### Product information

Article group	Inside End Cap AL
Item number	<b>CRA18625</b>
EAN / GTIN	4260182343173
Designation	Inside End Cap CSV 114

### Product description

Internal quick-release plug for sealing a piping system; suitable for permanent or temporary closure; wing nut for tightening; hollow screw also serves as a test connection for water pressure testing; suitable for horizontal or vertical installation; UV and weather-resistant material.

### Technical illustration



### Dimensioning

A   Size range	108-120 mm
B   Test connection	1/2 Inch
L   Length	100 mm

### Specification

Pressure density	0,5 bar
Weight	0.478 kg
Material	EPDM, Aluminium

### CE marking

according to	EN 681-1
--------------	----------

### Resistances

Heat resistant	120 °C
Cold resistant	-40 °C
UV resistant	✓
Suitable for soil	✓
Flush-mounting suited	✓

