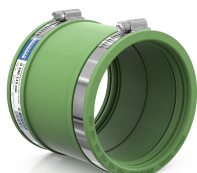




PRODUCT DATA SHEET

Product view



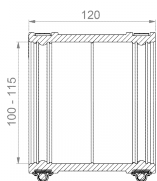
Product information

| | |
|---------------|-------------------------------|
| Article group | Standard Coupling Type 1 FKM |
| Item number | CRA14028FKM |
| EAN / GTIN | 4260431851398 |
| Designation | Standard Coupling CDC 115 FKM |

Product description

External adapter for connecting two piping systems with the same pipe dimensions (DN), as well as for the same or different materials and surface structures; noise-reducing sealing lips; suitable for horizontal or vertical installation; suitable for use in plaster, concrete, and soil; UV and weather-resistant material.

Technical illustration



Dimensioning

| | |
|----------------|------------|
| A Size range | 100-115 mm |
| L Length | 120 mm |

Specification

| | |
|-----------------------------------|---------------------------------|
| Pressure density | 0,6 bar |
| Vacuum pressure density | -0,3 bar |
| High-pressure flushing resistance | 120 bar |
| Socket wrench insert | SW 8 mm |
| Tightening torque | 6,0 Nm |
| Weight | 0.7 kg |
| Material | FKM, Stainless steel (AISI 304) |

CE marking

| | |
|--------------|-----------------------|
| according to | ISO 1629, ASTM D 1418 |
|--------------|-----------------------|

Resistances

| | |
|-----------------------|--------|
| Heat resistant | 200 °C |
| Cold resistant | -25 °C |
| UV resistant | ✓ |
| Suitable for soil | ✓ |
| Flush-mounting suited | ✓ |

