



PRODUCT DATA SHEET

Product view



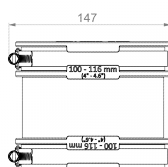
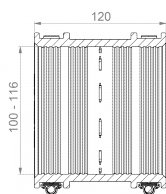
Product information

Article group	Standard Coupling Type 1
Item number	CRA11018
EAN / GTIN	4260182340189
Designation	Standard Coupling CDC 100

Product description

External adapter for connecting two piping systems with the same pipe dimensions (DN), as well as for the same or different materials and surface structures; noise-reducing sealing lips; suitable for horizontal or vertical installation; suitable for use in plaster, concrete, and soil; UV and weather-resistant material.

Technical illustration



Dimensioning

A Size range	100-116 mm
L Length	120 mm

Specification

Pressure density	0,6 bar
Vacuum pressure density	-0,3 bar
High-pressure flushing resistance	120 bar
Socket wrench insert	SW 8 mm
Tightening torque	6,0 Nm
Weight	0.56 kg
Material	EPDM, Stainless steel (AISI 304)

CE marking

according to	EN 681-1, EN 16397
--------------	--------------------

Resistances

Heat resistant	120 °C
Cold resistant	-40 °C
UV resistant	✓
Suitable for soil	✓
Flush-mounting suited	✓

